



Product Service

CERTIFICATE

No. Z2 15 03 60191 027

Holder of Certificate: **BYD COMPANY LIMITED**

No.1, Yan'an Road, Kuichong, Longgang District
518119 Shenzhen City, Guangdong
PEOPLE'S REPUBLIC OF CHINA



Certification Mark:



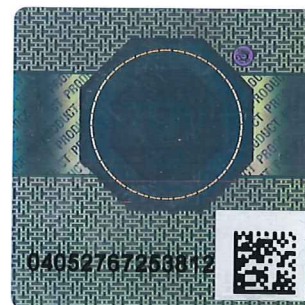
Product:

**Crystalline Silicon Terrestrial Photovoltaic (PV) Modules
(Poly Crystalline Silicon Photovoltaic (PV) Module)**

The product was tested on a voluntary basis and complies with the essential requirements. The certification mark shown above can be affixed on the product. It is not permitted to alter the certification mark in any way. In addition the certification holder must not transfer the certificate to third parties. See also notes overleaf.

Test report no.: 64290150087901

Valid until: 2020-03-22



Date, 2015-03-23

Harry Shubo Zhang
(Harry Shubo Zhang)

Page 1 of 3



Product Service

CERTIFICATE

No. Z2 15 03 60191 027

Model(s):

BYDxxxP6F-36 (xxx=240-315);
BYDxxxP6F-30 (xxx=200-260);
BYDxxxP6F-27 (xxx=180-235);
BYDxxxP6F-24 (xxx=160-210);
BYDxxxP6F-18 (xxx=120-155).
xxx: in step of 5
See Page 3 for model details

Parameters:

Application class:	Class A
Max. system voltage:	1000 V d.c.
Fire safety class:	Class C
Test Laboratory:	Yangzhou Opto-Electrical Products Testing Institute No. 10 West Kaifa Road, Yangzhou, 225009 Jiangsu, P. R. China
Construction:	Framed, with Junction box, Cable and Connectors

Tested
according to:

IEC 61215(ed.2)
EN 61215:2005
IEC 61730-1(ed.1);am1;am2
EN 61730-1:2007/A1:2012
IEC 61730-2(ed.1);am1
EN 61730-2:2007/A1:2012

Production
Facility(ies):

72759, 85342, 87011, 78666, 89547, 90968

Page 2 of 3



Product Service

CERTIFICATE

No. Z2 15 03 60191 027

Model	Rated output power at STC
BYDxxxP6F-36 (xxx=240-315, in step of 5);	240 W, 245 W, 250 W, 255 W, 260 W, 265 W, 270 W, 275 W, 280 W, 285 W, 290 W, 295 W, 300 W, 305 W, 310 W, 315 W
BYDxxxP6F-30 (xxx=200-260, in step of 5);	200 W, 205 W, 210 W, 215 W, 220 W, 225 W, 230 W, 235 W, 240 W, 245 W, 250 W, 255 W, 260 W
BYDxxxP6F-27 (xxx=180-235, in step of 5);	180 W, 185 W, 190 W, 195 W, 200 W, 205 W, 210 W, 215 W, 220 W, 225 W, 230 W, 235 W
BYDxxxP6F-24 (xxx=160-210, in step of 5);	160 W, 165 W, 170 W, 175 W, 180 W, 185 W, 190 W, 195 W, 200 W, 205 W, 210 W
BYDxxxP6F-18 (xxx=120-155, in step of 5).	120 W, 125 W, 130 W, 135 W, 140 W, 145 W, 150 W, 155 W

Page 3 of 3